

## FEATHER-LIGHT STEEL-TOUGH

### Galaxy Series

BMT-G4/088A | 335W | BMT-G4/108A | 415W

Ideal for C&I Roof Tops/ Patio/Pergola/Shed & Solar Trailer/Flat Roof

Galaxy Series is a featherlight BIPV (building-integrated photovoltaic) product designed for industrial and commercial applications. With an ultra-lightweight design and frameless surface/edge protection, Galaxy is especially ideal for low load-bearing and poor waterproofing roofs while ensuring power generation efficiency. It is worth mentioning that the 1.6mm ultra-thin glass is added to Galaxy, which greatly helps improve its ability to resist strong impact from wind and hail, bringing durability and safety to buildings with all-weather protection. Furthermore, various installation methods and the integrated design also enable rapid and streamlined installation, resulting in significant cost savings out of reduced labor time.



#### Ultra-lightweight

- The lightest weighs 5.6 kg/m<sup>2</sup>
- Up to 60% lighter than conventional module
- Suitable for roofs with a low load-bearing capacity



#### Various & Quick Installation

- 3 Min/pcs Rapid Installation
- Clamps for metal roofs
- Glue for flat roofs



#### High Reliability

- Wind<sup>1</sup> and hail<sup>2</sup> impact resistance
- Maximum static snow load up to 5400Pa
- Enhanced capability for self-cleaning
- Edge protection system
- Reduced fire risks

<sup>1</sup>Third-party lab test from CTC

<sup>2</sup>Third-party TUV lab: report number CN22Z6P8 001

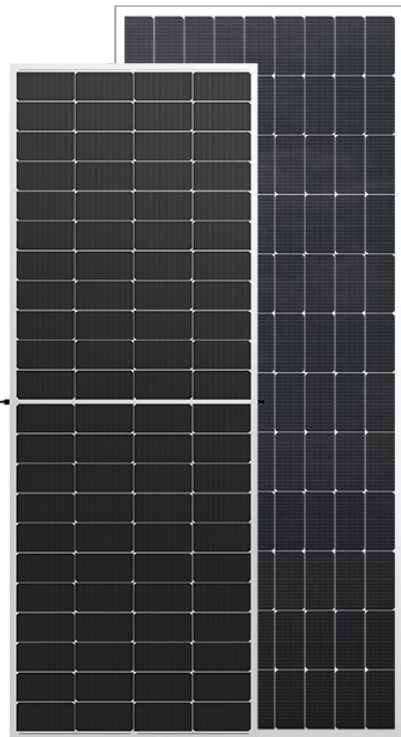


#### High Power Generation

- No roof penetration
- High-efficiency PERC cells
- 2% less generation loss<sup>3</sup> with ventilation design
- Up to 204W per square meter of power generation

<sup>3</sup>Based on internal lab test



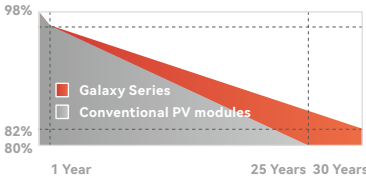


BMT-G4/088A

BMT-G4/108A

30-year power generation performance guarantee

- ✓ 2% degradation in the first year
- ✓ 12-year product warranty
- ✓ 0.55% decay per year
- ✓ 30-year power guarantee



Structural Data

BMT-G4/088A

BMT-G4/108A

Size*	2116 * 777 * 5mm	2275 * 897 * 4mm
Weight	9.2±0.7kg	11.4±0.8kg
Unit Weight	5.6±0.4kg/m <sup>2</sup>	5.6±0.4kg/m <sup>2</sup>
Front Surface	1.6mm tempered glass	
Cell Type	Mono PERC Half Cells (88pcs)	Mono PERC Half Cells (108pcs)
Frame	Frameless	Edge Protection

Electrical Data (STC)

Max Power (Pmax)	335W	415W
Power/ m <sup>2</sup> (W/ m <sup>2</sup> )	204W/ m <sup>2</sup>	203W/ m <sup>2</sup>
Efficiency (%)	20.4%	20.3%
Voltage at Max Power (Vmpp)	25.68V	31.68V
Voltage at Open Circuit (Voc)	30.47V	37.63V
Current at Max Power (Impp)	13.05A	13.11A
Current at Short Circuit (Isc)	13.88A	13.93A

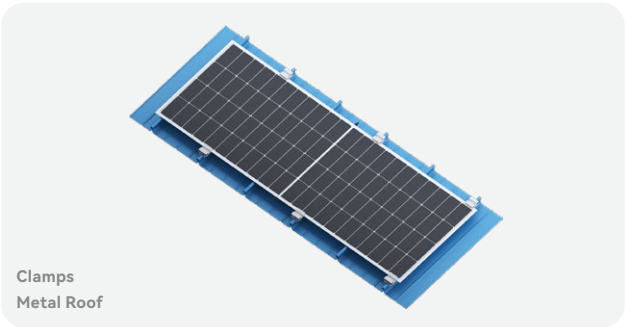
Operation Conditions

Maximum System Voltage	1500V
Maximum Fuse Rating Operation	25A
Temperature Range	-40° C ~+85° C
Hail Test	Hail diameter: 25mm Specified speed: 23m/s
The Rated Operating Temperature	45±2°C
Fire-resistant Class	C
Protection Class	II

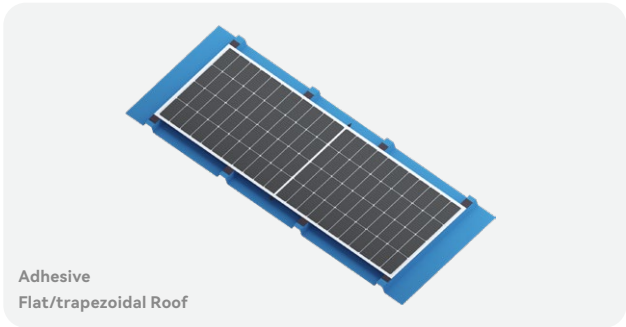
Temperature Parameter

Isc TP	0.048%/°C
Voc TP	-0.28%/°C
PMPP TP	-0.35%/°C

\*within a tolerance of 2 mm for length and width and 1 mm for thickness



Clamps  
Metal Roof



Adhesive  
Flat/trapezoidal Roof